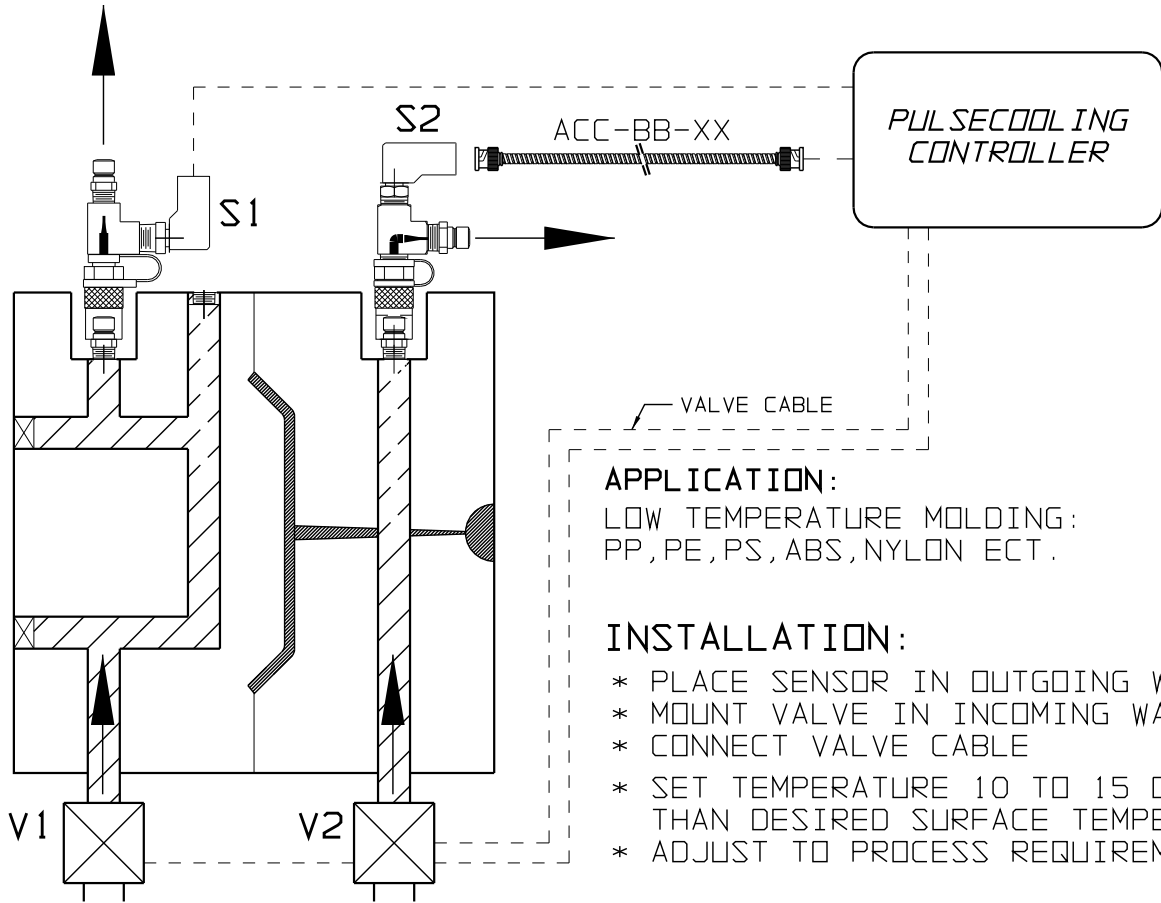


# EXTERNAL WET PROBE - PULSE SAMPLE SENSING FOR SENSING PULSE ADVANCED COOLANT INSIDE OF OUTGOING WATERLINE

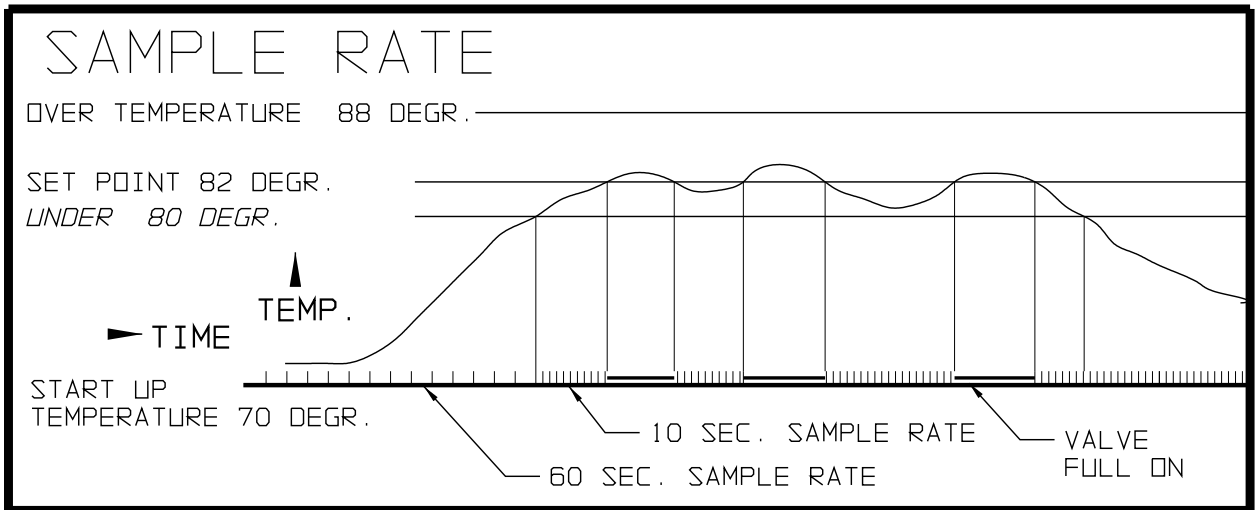


### APPLICATION:

LOW TEMPERATURE MOLDING:  
PP, PE, PS, ABS, NYLON ECT.

### INSTALLATION:

- \* PLACE SENSOR IN OUTGOING WATERLINE
- \* MOUNT VALVE IN INCOMING WATERLINE
- \* CONNECT VALVE CABLE
- \* SET TEMPERATURE 10 TO 15 DEGR. LESS THAN DESIRED SURFACE TEMPERATURE
- \* ADJUST TO PROCESS REQUIREMENT



## SALES ORDER NUMBER:

**EWQ-4-20-4-9 C**

2 = 1/4" O-DISC  
3 = 3/8" O-DISC  
4 = 1/2" O-DISC  
6 = 3/4" O-DISC

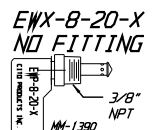
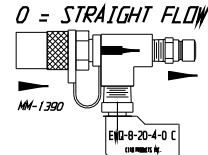
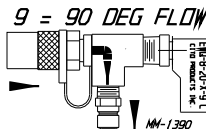
RESISTANCE  
IN K OHM

EXTERNAL WET PROBE  
"Q" TYPE QUICK CHANGE  
"X" NO FITTINGS

9 = 90 DEG  
0 = STRAIGHT  
CONFIG.

2 = 1/4" O-DISC  
3 = 3/8" O-DISC  
4 = 1/2" O-DISC  
6 = 3/4" O-DISC

C-SERIES  
MOLD  
COUPLER  
S-SERIES  
SPECIAL  
A -  
B -



MM-1820-B