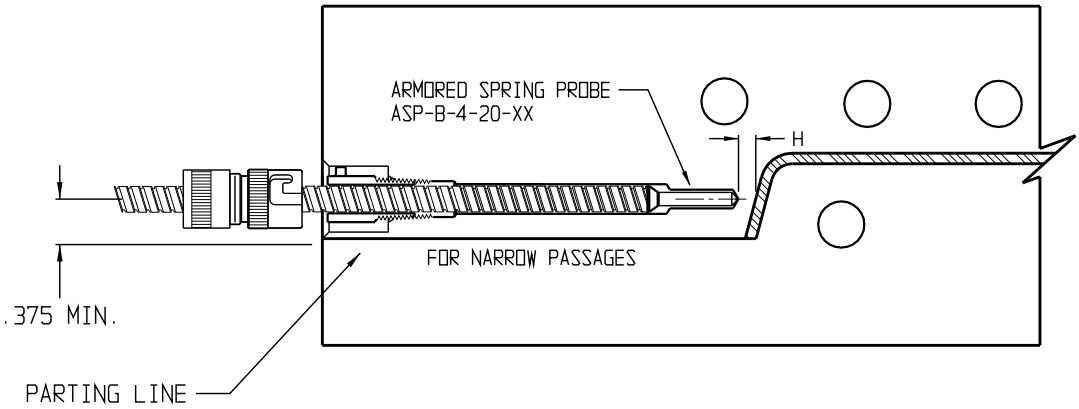




PRODUCTS INC.
WATERTOWN WI

MM-1610-A-1/8 X 1" ARM. SPRING-PROBE-BAYONET

PART NO.
FOR LONG TIP SENSOR
1/8" DIA X 1.00" LG
ASP-B-4-20-36 (1/8" TIP 36" LONG)
ASP-B-4-20-48 (1/8" TIP 48" LONG)
ASP-B-4-20-96 (1/8" TIP 96" LONG)
ASP-B-4-20-144 (1/8" TIP 144" LONG)



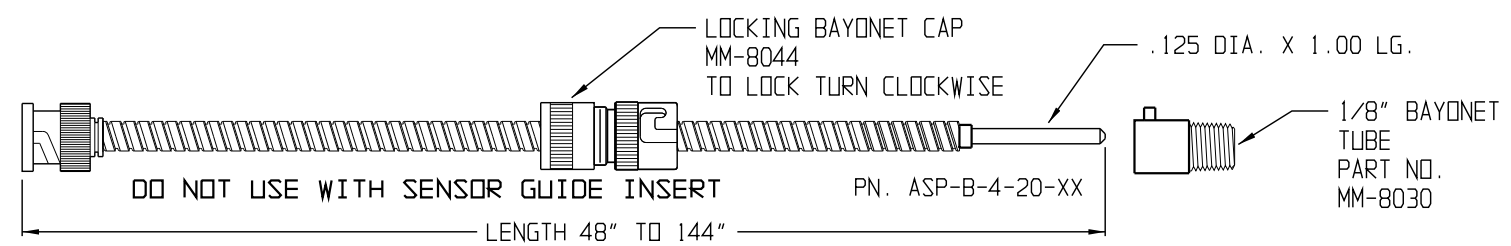
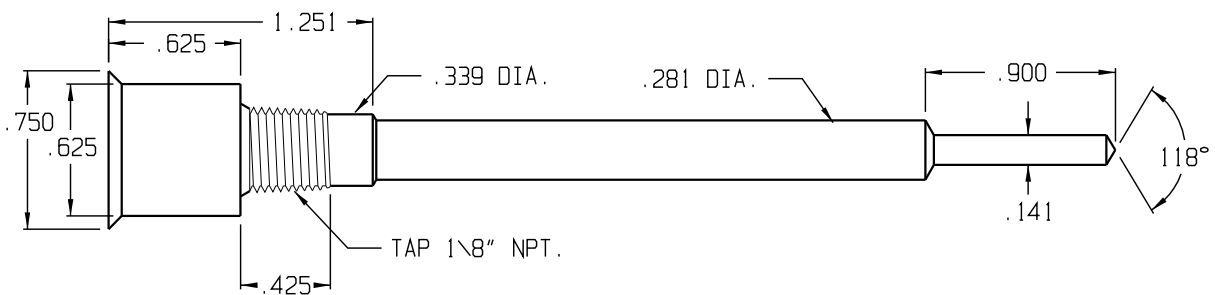
PROBE DISTANCE H

POSITION SENSOR APPROX IN CENTER OF PART
 POSITION SENSOR WALL THICKNESS
 AWAY FROM MOLDING SURFACE
 MIN .100 ON THIN WALL PARTS
 OR = WALL THICKNESS
 MAX .500 ON THICK WALL PARTS

INSTALLATION

- 1 VERIFY POCKET AND HOLE DIM. REMOVE BURRS AND SHARP CORNERS
- 2 MAKE SURE HOLE IS CLEAN AND FREE OF CHIPS
- 3 INSERT SENSOR MAKE SURE ITS PROPERLY SEATED AT TIP CHECK WITH PRUSSIAN BLUE
- 4 BEFORE INSERTING PROBE, APPLY HEAT TRANSFER COMPOUND
- 5 TO TEST PROBE-CONNECT OHM METER TO CENTER TERMINAL AND OUTSIDE RING OF CONNECTOR RESISTANCE SHOULD READ 20K OHM AT 77 DEG.F RESISTANCE WILL DECREASE WITH TEMP.INCREASE

MACHINING DIMENSIONS



1/8" 1" TIP - ARMORED SPRING PROBE (BAYONET TYPE) INSTALLATION