

(2) SHCS
6-32 X 3/8" LG

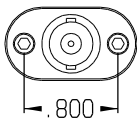
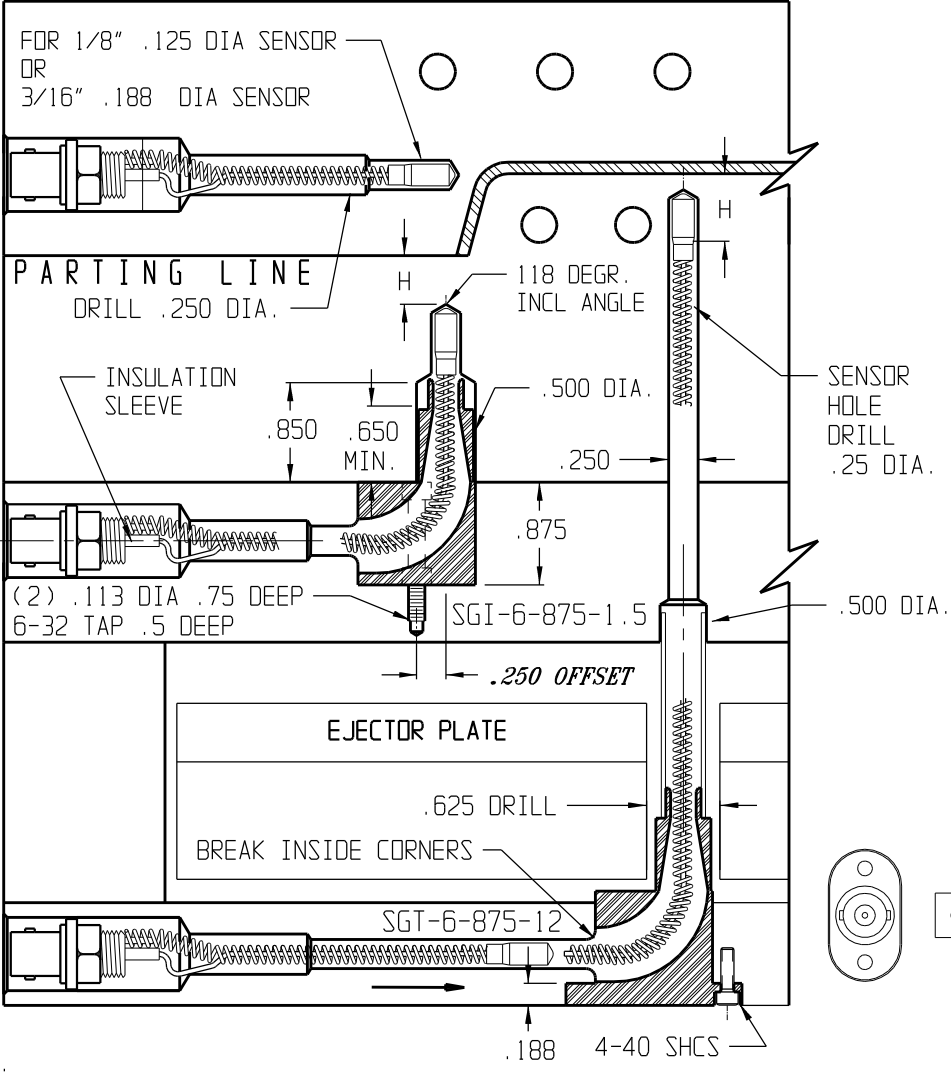


PLATE-SENSOR-INSTALLATION - SBP-1800-A

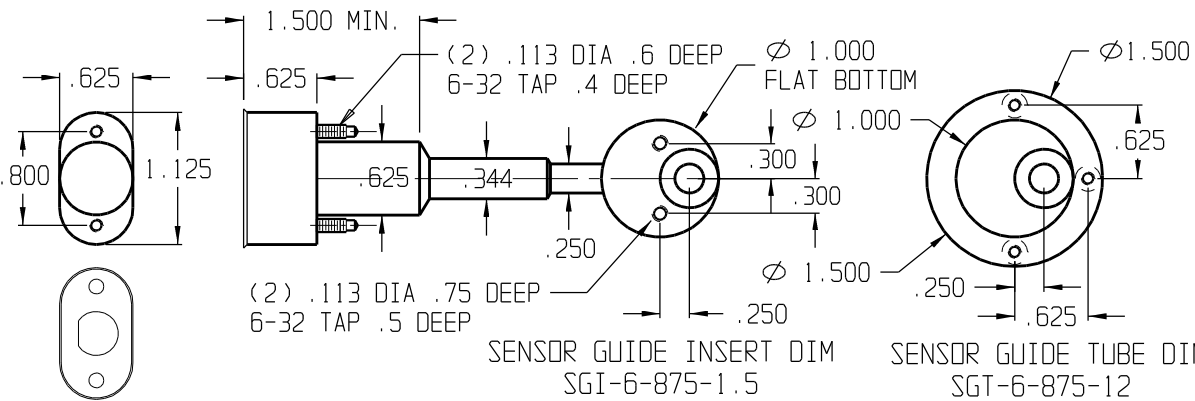
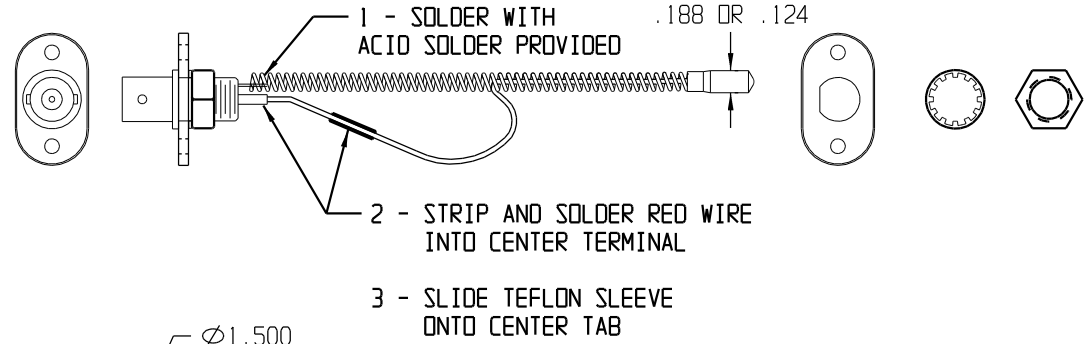


SENSOR DISTANCE "H"

SENSOR DISTANCE SHALL BE NO LESS THAN .100 FROM MOLDING SURFACE OR MOLDED MATERIAL THICKNESS

SENSOR INSTALLATION

- 1 - VERIFY POCKET AND HOLE DIMENSIONS.
- 2 - INSERT SENSOR TO DETERMINE HOLE DEPTH
- 3 - PEEL RED WIRE FROM CENTER OF SPRING TO OUTSIDE
- 4 - INSERT WIRE IN HOLE AND CUT FLUSH WITH MOLD SURFACE
- 5 - PLACE SPRING ON TERMINAL AND SOLDER WITH SOLDER PROVIDED
- 6 - SLIP TEFLON SLEEVE ONTO TERMINAL
- 7 - STRIP RED WIRE - 1/8" AND SOLDER INTO CENTER OF TERMINAL
- 8 - RINSE SOLDER JOINTS WITH SOAP WATER
- 9 - SLIDE TEFLON SLEEVE INTO CENTER TAB
- 10 - APPLY HEAT TRANSFER COMPOUND ON SENSOR TIP (PROVIDED IN SYRINGE)
- 11 - INSERT TIP INTO MOLD SENSOR HOLE AND LINE UP FLAT ON CONNECTOR
- 12 - HOLD IN POSITION - WITH POINTED OBJECT-AND SPIN ON THE HEX NUT
- 13 - CHECK RESISTANCE WITH OHM METER - READ 20K OHM AT 77 DEG F
- 14 - PLACE HAND ONTO AREA WHERE THE TIP IS LOCATED
RESISTANCE SHOULD READ LESS - AS TEMPERATURE RISES



ORDER NO.
SBP-2-20-XX (1/8" TIP DIA)
SBP-3-20-XX (3/16" TIP DIA)

SPRING BEAD PROBE	SENSOR DIA. IN 1/16	RESISTANCE IN K OHM @ 77 DEGR. F	SENSOR LENGTH IN INCHES 12 OR 24" LG
	2=1/8"		
	3=3/16"		